

# Double Row Housed Easy Clean Magnet

High Intensity – Rare Earth



Data Sheet No 511

## Product Data:-



Fig A.

### **Preface:**

Eclipse high intensity magnetic Easy Clean housed grids offer unsurpassed levels of contamination removal. These units are so effective they can even remove sub micron ferrous and paramagnetic contamination from the most demanding and arduous of process environments.

The unit comprises of two high intensity Easy Clean magnetic grids with the rods of each grid having an offset design for maximum efficiency. The grids are secured into the housing via tri-cone locking nuts. It is these tri-cone nuts that ensure even pressure is generated around the food grade seal.

Where cleaning time is to be kept to a minimum the units can be supplied with quick release toggle clamps or alternatively why not consider the Auto-Shuttle unit that requires no intervention.

Common installation locations are raw material inlet points or post silo etc. It is common to have numerous units installed throughout a processing facility to ensure contamination is removed at source of generation.

All powders and granular type materials that are dry can be processed through the unit. Electrical safety interlocks can be fitted to each grid row to stop the process should they be accidentally opened see fig A.

### **Cleaning:**

This unit benefits from the Eclipse 'Easy Clean' system. This design allows all attracted contamination to be easily and quickly collected for further inspection or analysis.

Once the unit requires cleaning simply remove the outer grid securing tri-cone locking nuts and remove the grid from the housing. The grid assembly can now be separated once the central tri-cone locking nut has been removed allowing all attracted contamination to simply fall away.

### **Suitable Products:**

Dry powders and granulates.

### **Suitable Locations:**

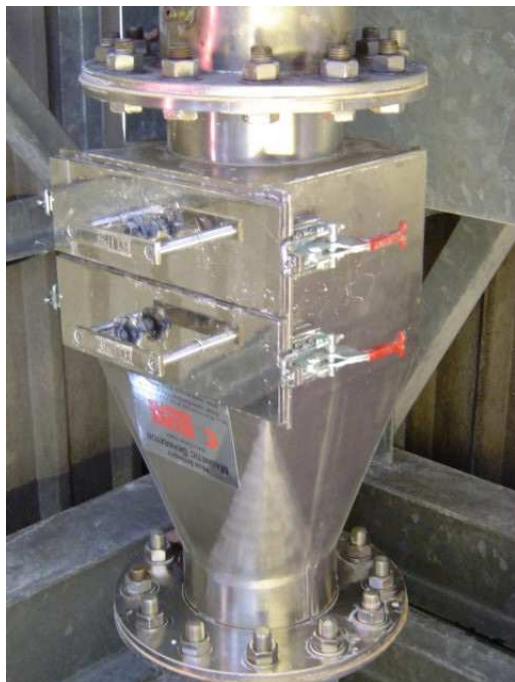
Inlet/outlet points, pre/post silo and machinery points.

### **Benefits:**

Easy to clean ■ High collection capacity ■ Reduces 'spark' risk  
Removes sub micron sized contamination ■ Meet audit requirements ■ Rare Earth 9,000 Gauss ■

### **Category:**

Secondary.

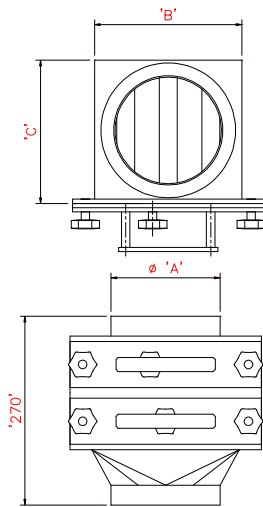


# Double Row Housed Easy Clean Magnet

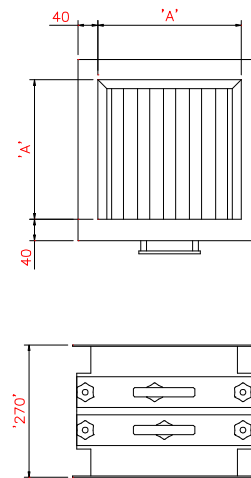
High Intensity – Rare Earth



## Technical Data:- Round.



## Square.



### Sizes:-

Part No	Inlet/Outlet A (mm / " )	Width B	Depth C	No Rods	Weight Kgs
<b>Round</b>					
ECHD100	100 / 4" Ø	158	164	2 + 1	9
ECHD150	150 / 6" Ø	208	214	3 + 2	13
ECHD200	200 / 8" Ø	258	264	4 + 3	24
ECHD250	250 / 10" Ø	308	314	5 + 4	29
ECHD300	300 / 12" Ø	358	364	6 + 5	34
ECHD350	350 / 14" Ø	408	414	7 + 6	39
ECHD400	400 / 16" Ø	458	464	8 + 7	55
<b>Square</b>					
ECHD1010	100 / 4" Sq	108	100	1 + 1	6
ECHD1515	150 / 6" Sq	158	150	2 + 1	8
ECHD2020	200 / 8" Sq	208	200	3 + 2	11
ECHD2525	250 / 10" Sq	258	250	4 + 3	21
ECHD3030	300 / 12" Sq	310	300	5 + 4	26
ECHD3535	350 / 14" Sq	360	350	6 + 5	30
ECHD4040	400 / 16" Sq	410	400	7 + 6	34

### Performance:-

All dimensions in mm

#### Magnetic Performance:

7,000 Gauss - Standard Strength  
9,000 Gauss - High Strength

#### Performance Reading:

On tube surface

#### Magnetic Material:

Rare Earth Neodymium Iron Boron

#### Magnet Grade:

N45 – Inspected & confirmed via hysteresis prior to use

#### Temperature:

-20° C/ + 90° C

#### Pressure:

+/- 0.2 Bar

### Materials:-

#### Housing:

316 Grade Stainless Steel

#### Other Parts:

316 Grade Stainless Steel

#### Surface Finish:

Brushed internally/externally to 1.2µm

#### Sealing:

Self adhered white foam

#### Tri-cone Nuts:

Brass & Moulded Plastic

### Options:-

Stainless Steel toggle clamps  
Overpressure to +/- 10 Bar  
304 Grade Stainless Steel  
ATEX certified  
Safety relay switches  
Grid support track system

High temperature Samarium Cobalt magnetic material, + 250° C  
Sizes up to 1000mm Ø or square  
Pharmaceutical specification  
Flanged to suit  
Metal detectable Silicon rubber seal – Dark blue, FDA Approved

Eclipse Magnetics Ltd - A Spear & Jackson Group Company

Atlas Way, Atlas North, Sheffield, S4-7QQ, England

Tel:- ++44 (0)114 225 0555 Fax:- ++44 (0)114 225 0525

e-mail enquiries@eclipse-magnetics.co.uk - Web Site www.magneticseparation.co.uk

Copyright Eclipse Magnetics 2008

