

ELECTRO-HOLDING MAGNETS

General purpose holding magnets for demanding industrial and architectural applications.



Electro-permanent magnets
Energise to release



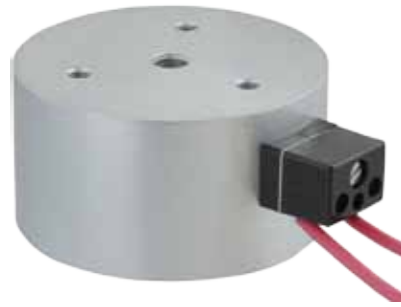
Electro-magnets
Energise to hold

Ideal for use in:

- Machine tools
- Door locking / holding
- Feeder mechanisms
- Short stroke / high force operations
- Textile machinery
- Automation
- Office machines
- Grill locking
- Packaging machinery
- Remote hold / release

Electro-magnets: Energise to hold

Electrical current is required to turn the magnet ON. Power is removed to turn the magnet OFF



Magnetic Pull (kg)

Air gap (mm)	Product diameter (mm)				
	25	30	40	50	65
0.00	11.3	25.3	57.5	109.7	167.7
0.09	3.4	9.4	28.9	63.9	94.9
0.18	1.9	5.0	15.3	40.3	55.4
0.27	1.1	3.2	9.7	26.8	34.7
0.36	0.7	2.1	5.9	19.0	23.7
0.59	0.4	1.1	3.2	10.0	12.9
1.00	0.2	0.5	1.5	4.8	6.4
1.59		0.3	0.8	2.4	3.1
2.00		0.2	0.4	1.0	1.5
4.00			0.3	0.6	1.0

Details

Sturdy zinc plated cylinder, passivated with body mounting
High-quality permeable iron for low remanence
Armature plates to suit

Operating voltage 12, 24, 24VDC & 214VDC (240VAC Rectified plug connector)

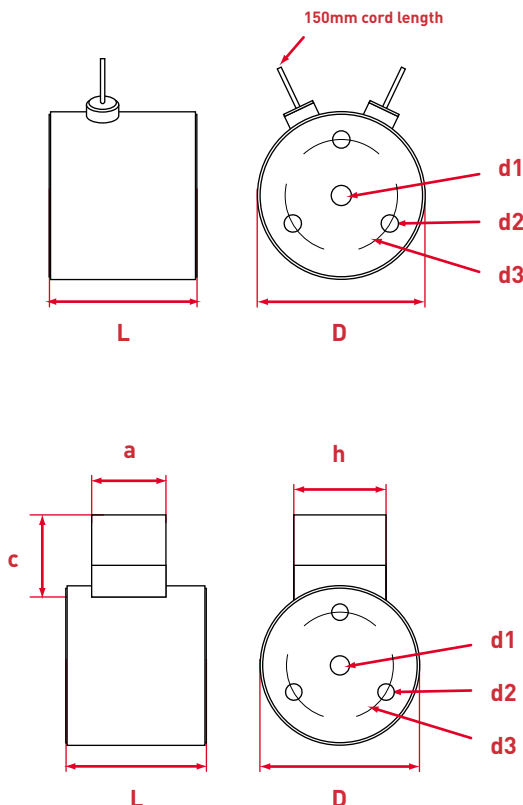
Connector options Terminal block, free leads, plug connector

Mountings Machined holes in rear face of magnet

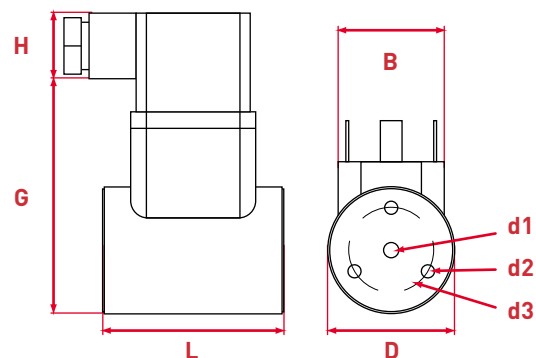
Finish Bright zinc plated with machined face

Holding Force Up to 3700N

Dimensions



Dimension	Product diameter (mm)				
	25	30	40	50	65
D	25	30	40	50	65
L	20	24	27	30	35
a			13.5	13.5	13.5
h			16	16	16
B				30	30
G				63	78
H				36	36
d1	M4	M5	M5	M5	M8
d2	M3	M3	M4	M4	M5
d3	15	18	26	34	40



Electro-magnets: Energise to release

Electrical power is required to turn the magnet OFF. Power is removed to restore the magnet to ON.



Magnetic Pull (kg)

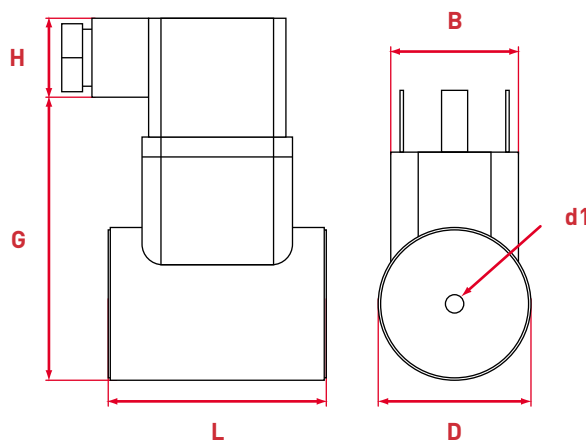
Air gap (mm)	Product diameter (mm)	
	35	50
0.00	28.5	47.1
0.09	9.8	39.8
0.18	5.4	26.4
0.27	3.7	19.0
0.36	3.1	13.1
0.59	1.7	11.2
1.00		5.4
1.59		3.2

Details

Sturdy zinc plated cylinder, passivated with body mounting
High-quality permeable iron for low remanence
Armature plates to suit

Operating voltage	24VDC & 214VDC (240VAC Rectified plug connector)
Connector options	Terminal block, free leads, plug connector
Mountings	Central machined hole in rear face of magnet
Finish	Bright zinc plated with machined face
Holding Force	Up to 3700N

Dimensions



Dimension	Product diameter (mm)	
	35	50
D	35	50
L	48	63
B	30	30
G	45	63
H	36	36
d1	M5	M5

About Eclipse Magnetics

From our base in Sheffield we manufacture and supply over 20,000 magnets and magnetic products.

Our range includes magnet materials, pot magnets, magnetic tools, magnetic chucks, lifting magnets, magnetic filters, magnetic separators, switchable magnets and handling systems.

We supply from stock and are also able to produce magnets and products engineered to your specifications.



Other products available from Eclipse Magnetics



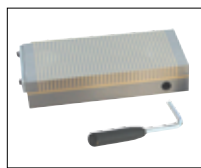
Magnet materials



Lifting magnets



Pot magnets



Magnetic chucks



Magnetic tools



Metal detectors



Magnetic filters



Magnetic separators

Call **0114 225 0600** to make an enquiry