

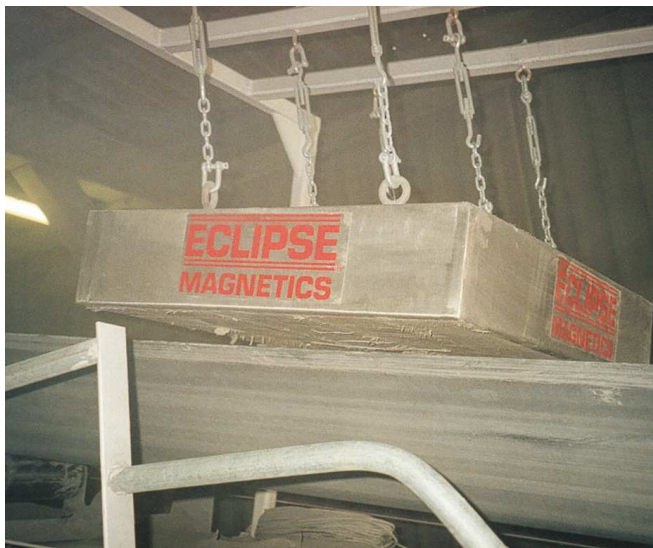
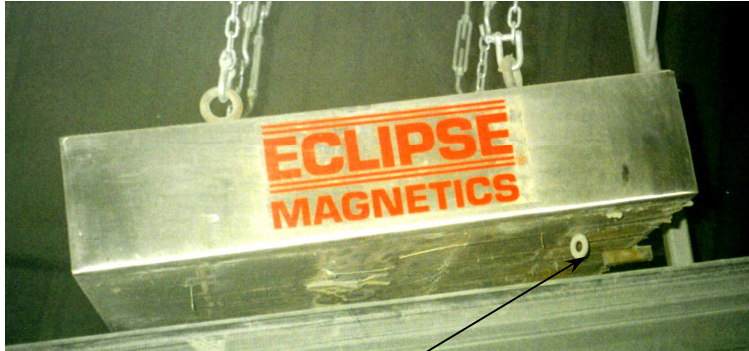
# Permanent Plate Magnet

Ceramic Magnetic Material



Data Sheet No 604

## Product Data:-



### **Preface:**

Recycling, quarrying and heavy industries continue to benefit from metal contamination extracted by use of permanent plate magnets.

These units can be placed above flat or trough type conveyors. Large permanent magnetic packs generate deep penetrating magnetic flux fields that attract and remove 'tramp' type steel items.

This design of unit is considerably cheaper to purchase and with no running costs other than cleaning are considerably cheaper than electro-magnetic units.

When considering installation points it should be noted that an steel belt support rollers will needs to be changed to non magnetic ones due to possible flux field absorption. For heavily contaminated materials consider the self cleaning permanent Overband unit, data sheet 605.

### **Cleaning:**

As the magnetism cannot be switched off cleaning needs to be conducted manually. Using either a scraper tool or gloved hand all attracted contamination needs to be removed manually. To aid cleaning plate magnets can be supplied with a sliding cleaning plate.

### **Suitable Products:**

All conveyable products, wood chip, biomass, recyclables, Aggregates, coal etc.

### **Suitable Locations:**

Above transfer conveyors, vibratory feeder outlets etc.

### **Benefits:**

- Allows difficult products to be screened
- High volume capacity
- Designed for 24/7 operation
- Removes large to medium sized contamination

### **Category:**

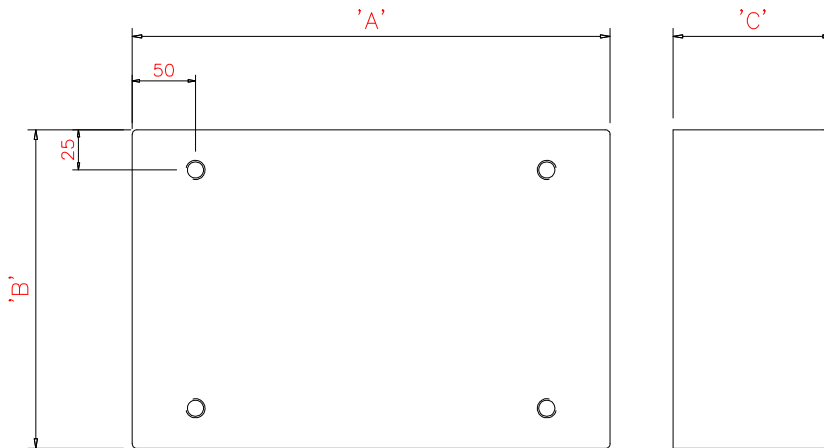
Primary.

# Permanent Plate Magnet

Ceramic Magnetic Material



## Technical Data:-



### Sizes:-

Part No	Length A	Width B	Depth C	Thread Detail	Weight Kgs
<b>100 Series</b>					
PM3020	300	200	100	M12	40
PM4020	400	200	100	M12	50
PM5020	500	200	100	M12	65
PM6020	600	200	100	M12	85
PM7020	700	200	100	M12	95
PM8020	800	200	100	M12	105
PM9020	900	200	100	M12	120
PM10020	1000	200	100	M12	135
<b>200 Series</b>					
PM4040	400	400	200	M16	220
PM5040	500	400	200	M16	265
PM6040	600	400	200	M16	320
PM7040	700	400	200	M16	370
PM8040	800	400	200	M16	420
PM9040	900	400	200	M16	470
PM10040	1000	400	200	M16	530
<b>300 Series</b>					
PM6080	600	800	300	M20	730
PM7080	700	800	300	M20	850
PM8080	800	800	300	M20	970
PM9080	900	800	300	M20	1100
PM10080	1000	800	300	M20	1200
PM12580	1250	800	300	M20	1450

### Performance:-

All dimensions in mm

**Magnetic Material:**  
**Magnetic Field Depth:**  
**Temperature:**

Ceramic Strontium Ferrite  
 100 Series = 100mm – 200 Series = 200mm – 300 Series = 300mm\*  
 -40° C/ + 80° C

\*Mild Steel test piece 5mm Ø x 25mm long

### Materials:-

**Cover:**  
**Back plate:**  
**Lifting Points:**

304 grade Stainless Steel  
 Painted Mild Steel  
 four threaded holes

### Options:-

Sliding cleaning plate  
 Full Stainless Steel cover  
 Forged lifting eyes  
 Protective paint coating

Eclipse Magnetics Ltd - A Spear & Jackson Group Company  
 Atlas Way, Atlas North, Sheffield, S4-7QQ, England  
 Tel:- ++44 (0)114 225 0555 Fax:- ++44 (0)114 225 0525  
 e-mail enquiries@eclipse-magnetics.co.uk - Web Site www.magneticseparation.co.uk

102008-Issue 1

Copyright Eclipse Magnetics 2008