

# Rod Magnet

High Intensity – Rare Earth



Data Sheet No 501

## Product Data:-



### **Preface:**

High intensity Rare Earth rod magnets are extremely efficient at removing ferrous and paramagnetic contamination down to sub micron in size from free flowing products including powders & liquids.

Rods are of particular interest to OEM's who wish to incorporate them into their machinery with the minimal amount of re-design and also offering flexibility.

Each rod is tapped with an M6 thread at both ends as standard for ease of installation, or alternatively without threaded detail or with studs, which can be specified during order placement.

Many sizes are held in stock to allow for same day despatch.

### **Cleaning:**

Depending upon the configuration, rod magnets can be cleaned in seconds by simply pushing the attracted contamination to one end, this will release any attracted contamination enabling further analysis to be conducted.

### **Suitable Products:**

All powders, granulates & liquids etc.

### **Suitable Locations:**

Any process area.

### **Benefits:**

Easy to clean ■ Simple to use ■ Enables flexible design ■  
Removes micron sized contaminants ■  
Meet audit requirements ■ Rare Earth, three magnetic strengths to choose from ■

### **Category:**

Secondary.

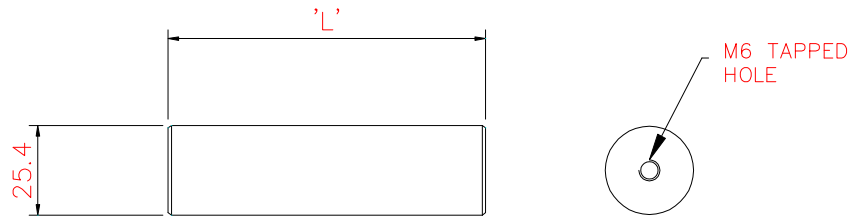


# Rod Magnet

High Intensity – Rare Earth



## Technical Data:-



### Sizes:-

Part No	Length L	Weight Kgs
SR100	100	0.35
SR150	150	0.53
SR200	200	0.70
SR250	250	0.88
SR300	300	1.05
SR350	350	1.23
SR400	400	1.40
SR450	450	1.58
SR500	500	1.75
SR550	550	1.93
SR600	600	2.10
SR650	650	2.28
SR700	700	2.45
SR750	750	2.63
SR800	800	2.80
SR850	850	2.98
SR900	900	3.15
SR950	950	3.33
SR1000	1000	3.50

All dimensions in mm

### Performance:-

<b>Magnetic Performance:</b>	7,000 Gauss - Standard Strength 9,000 Gauss - High Strength 11,000 Gauss - Super High Strength
<b>Performance Reading:</b>	On tube surface
<b>Magnetic Material:</b>	Rare Earth Neodymium Iron Boron
<b>Magnet Grade:</b>	N35 & N45 – Inspected & confirmed via hystergaph prior to use
<b>Temperature:</b>	-20° C/ + 90° C

### Materials:-

<b>Tubing:</b>	316 Grade Stainless Steel – Aerospace Quality
<b>Other Parts:</b>	316 Grade Stainless Steel
<b>Surface Finish:</b>	Polished to 0.6µm
<b>Rod End Detail:</b>	Tapped M6 x 8mm both ends

### Options:-

High temperature Samarium Cobalt magnetic material + 250° C  
Pharmaceutical specification  
Supplied without tapped detail or studded  
Any thread size & detail  
ATEX certified

